



DD GROUP
BUILDERS & DEVELOPERS

DD GROUP

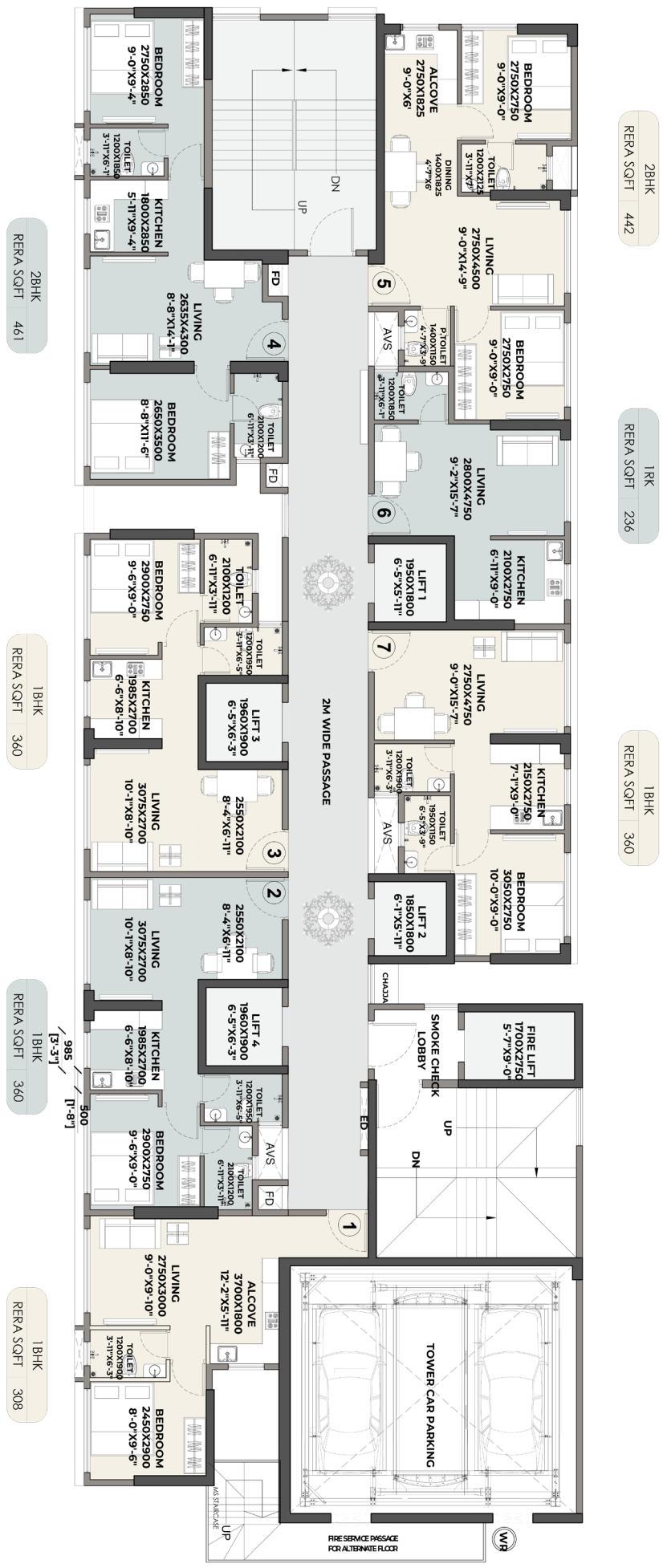


OM
SHANTIVAN
skies

— CODENAME —

SKY-LIVING

A LANDMARK THAT COMMANDS THE CLOUDS



2BHK
RERA SQFT 442

1RK
RERA SQFT 236

1BHK
RERA SQFT 360

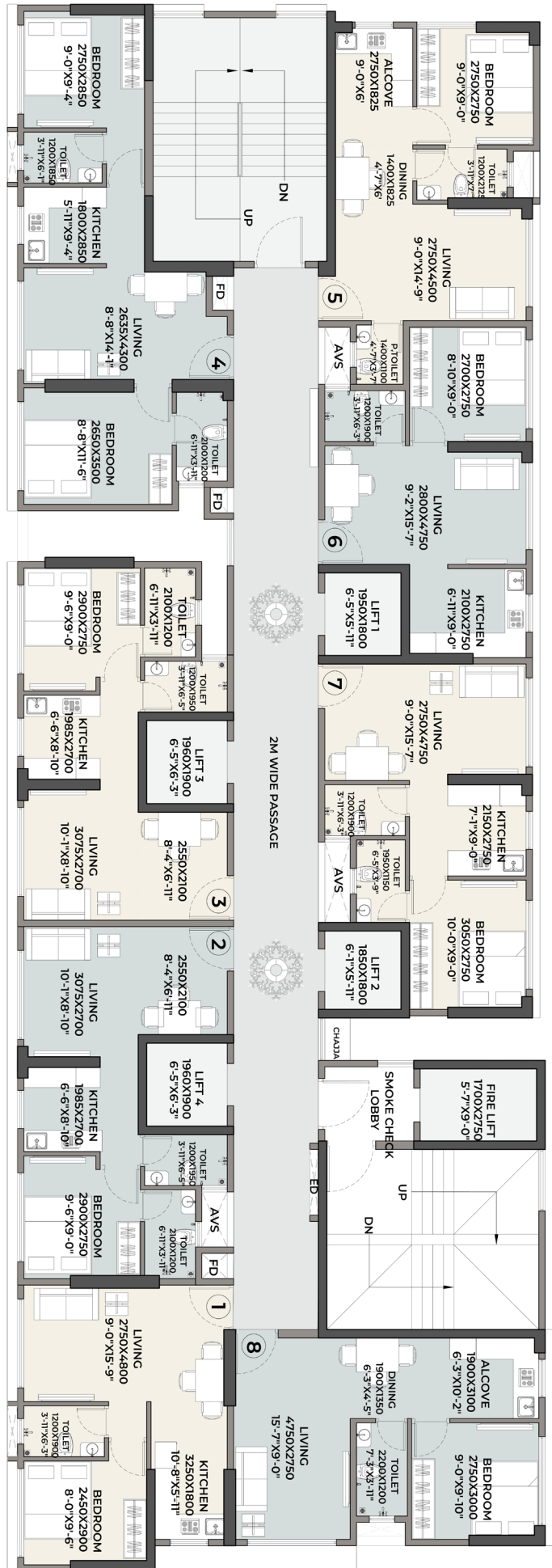
2BHK
RERA SQFT 461

1BHK
RERA SQFT 360

1BHK
RERA SQFT 360

1BHK
RERA SQFT 308

1st to 4th & 6th to 9th FLOOR PLAN



1BHK
RERA SQFT 355

1BHK
RERA SQFT 320

1BHK
RERA SQFT 360

1BHK
RERA SQFT 360

1BHK
RERA SQFT 360

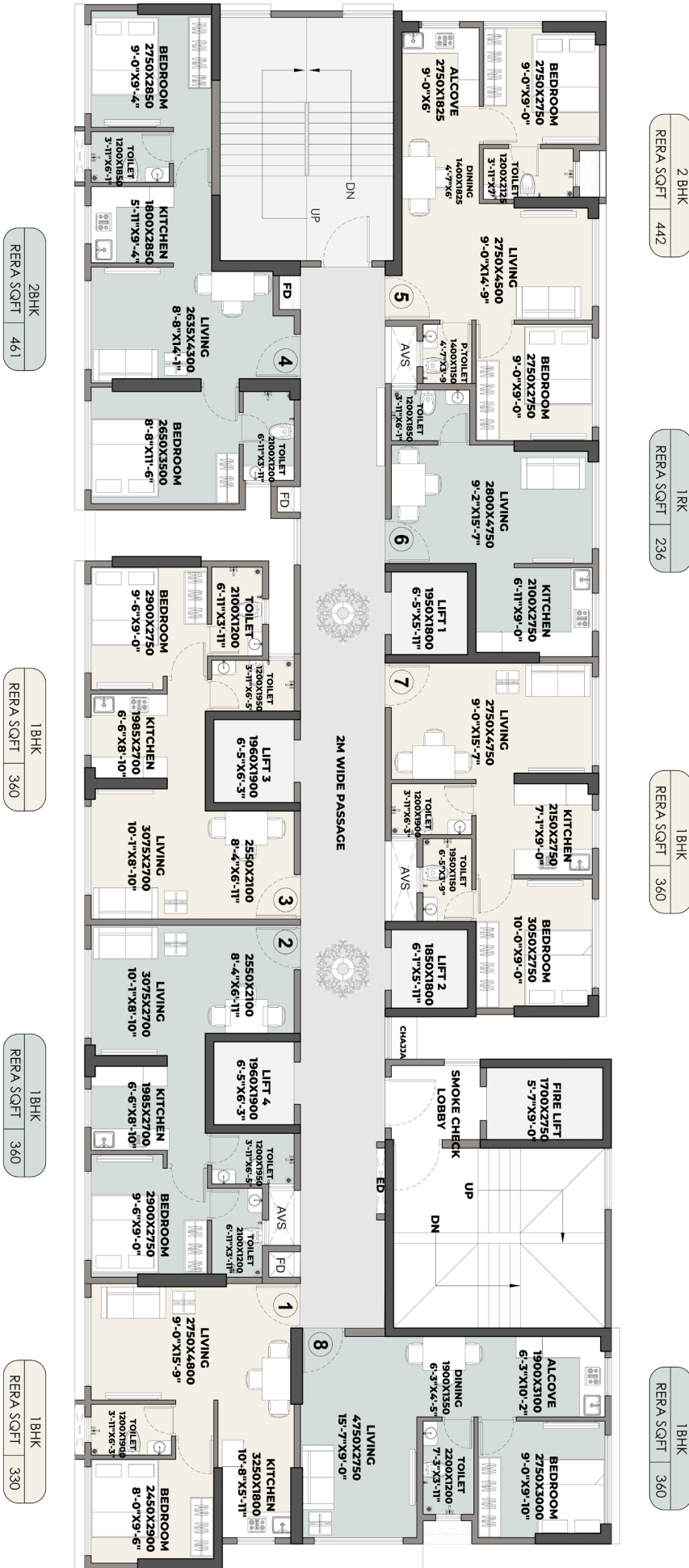
2BHK
RERA SQFT 461

1BHK
RERA SQFT 360

1BHK
RERA SQFT 360

1BHK
RERA SQFT 330

10th, 11th & 13th to 18th & 20th FLOOR PLAN



21th to 25th & 27 to 32nd & 34th to 38th FLOOR PLAN

The Platinum Standard Essentials



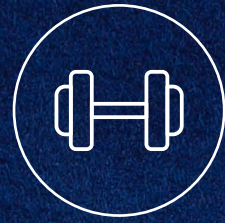
Rooftop
Kids Play Area



Rooftop
Garden



Rooftop
Seating Area



Gymnasium



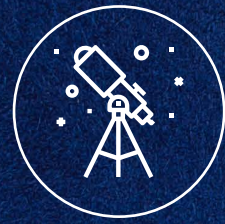
Jogging Track



Indoor Games



Yoga And
Meditation Area



Star Gazing

Internal & External Amenities

Modern Building Elevation

Designer Entrance Lobby

Brand High Speed Elevator With Ard System

Textured Paint For Exterior Wall

Video Intercom System

Branded CP And Sanitary Fittings

Branded Electrical Fitting

Mahanagar Gas Line

Power Backup

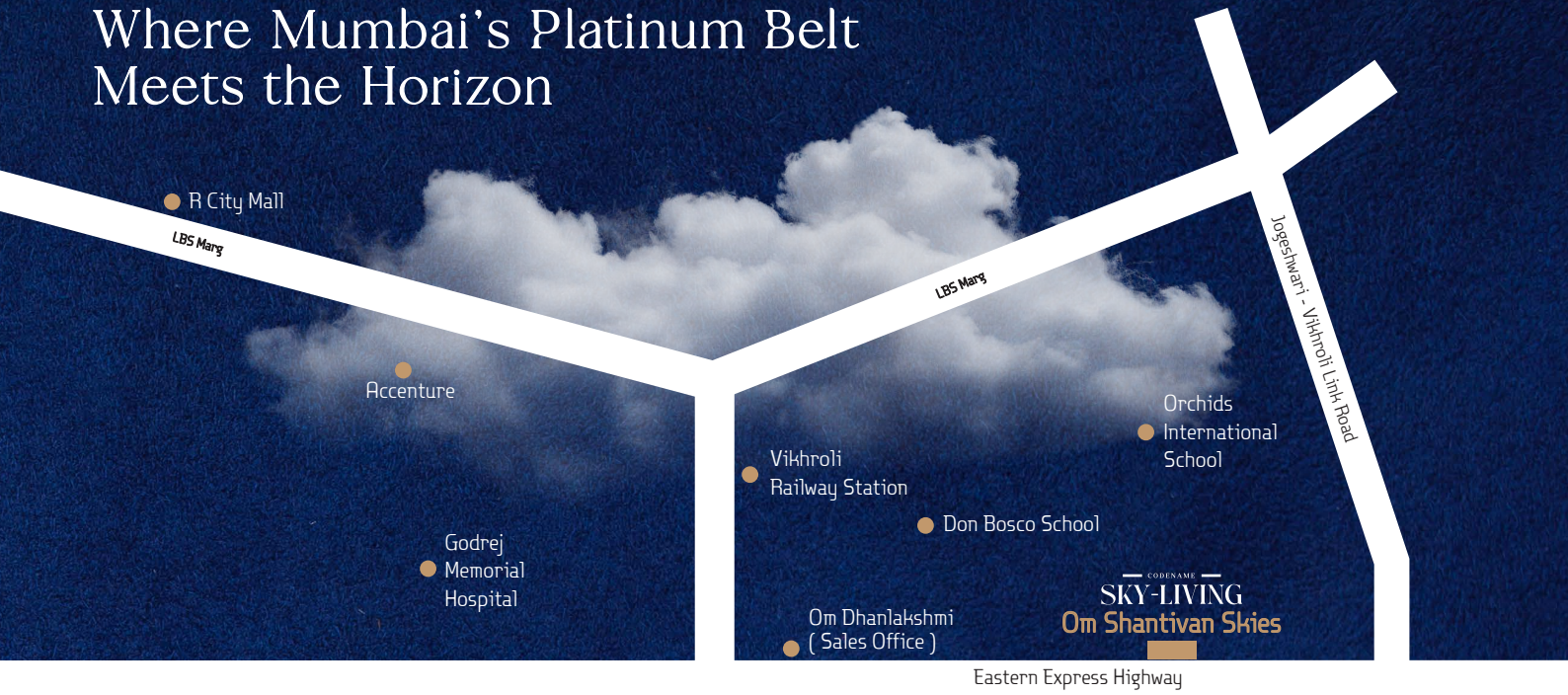
Branded Vitrified Tiles In Flooring

Earthquake Resistant Construction

Fire Protection System As Per Cfo

Compound Wall With Main Gate Et Wicket Gate

Where Mumbai's Platinum Belt Meets the Horizon



Well-Connected to Western & Central



2 Min

Eastern Express Highway

7 Min

Vikhroli Railway Station

7 Min

Jogeshwari Vikhroli Link Road

7 Min

LBS Et New Freeway

12 Min

Powai Business District

15 Min

R City Mall Et BKC



Site Address

Bldg. No. 409,
Opp. Vidya Mandir School,
Near Crsemon School,
Tagore Nagar, Vikhroli
Mumbai, Maharashtra 400083

Sale Office

Shop no. 2, Bldg. No. 38,
Om Dhanalaxmi Heights,
Tagore Nagar, Vikhroli East,
Mumbai, Maharashtra 400083

Design Architect
USP Designz
Ar. Ujesh S Ramjiyani

Licensing Architect
Ar. J L Rathod

In-house Architect
DD Dezines
Ar. Bhavana D. Bhanushali

RCC Consultant
Paras Consultants

Chartered Accountant
Rajesh Dholu & Associates

Inhouse Legal
Adv. Adarsh Diwani

www.dd.dezinesgroup.in

+91 9619 011 888



MAHARERA NO: PR1180002502829
<https://maharera.mahaonline.gov.in>



Disclaimer: The plans are subject to changes/ modifications /amendments (without notice), as per the suggestion of architect and/or all other concern authorities. All the amenities, facilities etc. are subject to the approval of the concerned authorities and subject to the changes, if required. All rendering and maps are artists impressions and not actual depiction of the building and landscaping and are for representational purposes only. The number of apartments, towers and other details are only indicative and the developer/owner reserves the right to change any or all of these in the interest of the development. All are subject to change without prior notice. Developer does not warrant or assume any liability or responsibility for the accuracy or completeness of any information disposed.